

Hydraulic System Schematics

Section 04-01-08

Komatsu has made every effort to make this manual as accurate as possible based on the information available at the time of publication and printing. Continuous improvement and advancement of product design may cause changes to machines which may not have been included in this publication. Komatsu reserves the right to make changes and improvements at any time. To ensure the most current information, please contact your service center.

For the newest version of this schematic, check the online Parts Manual database, or Komatsu Service Center.

Fluid Power Diagram

Auxiliary Steering Hardware Group (optional)

Auxiliary Steering Hose Group (optional)

Auxiliary Hydraulic Oil Cooler Diagram (optional)

Auxiliary Steering Diagram (optional)

This Page Intentionally Left Blank

Fluid Power

05 ITEM E45 WAS 4271128		1346701	6-21-17	KMD	JD	JD	REVISIONS	
REV	DESCRIPTION	DATE	BY	CHK	APP	REV	DESCRIPTION	DATE
00	RELEASE	NL12-2355	9-6-12	KMD	AY	AY		
01	ITEM 56 WAS 4274814	NL12-2357	9-27-12	KMD	JD	JD		
02	SEE SHEET 5	NL13-1559	2-26-13	KMD	JD	JD		
03	ITEM E33 WAS 4004229	NL14-1404	2-10-14	KMD	JD	JD		
04	ITEM 176 WAS 4243731, MS5 WAS 6945595	1324708	3-9-16	KMD	JD	JD		

HOSE ASSEMBLIES	
DESIGNATION	DESCRIPTION
QJ	0" JIC END FITTING
45J	45° JIC END FITTING
90J	90° JIC END FITTING
90JL	90° JIC LONG DROP END FITTING
QF	90° SPLIT FLANGE END FITTING
45F	45° SPLIT FLANGE END FITTING
90FJ	90° SPLIT FLANGE END FITTING
	90° SPLIT FLANGE JUMPSIZE END FITTING

DESIGNATOR	DESCRIPTION
CV	CHECK VALVE
FC	FLOW CONTROL PUMP
P	PRESSURE SWITCH
PT	PRESSURE TRANSDUCER
RV	RELIEF VALVE
SOL	SOLENOID
SS	SHOCK SUPPRESSOR
SV	SEQUENCE VALVE
TP	TEST PORT

FITTINGS	
DESIGNATION	DESCRIPTION
FJ	FEMALE JIC
FP	FEMALE PIPE (NPT)
MJ	MALE JIC
MO	MALE O-RING
MP	MALE PIPE (NPT)
SF	SPLIT FLANGE

ITEM	PART NO.	DESCRIPTION	ITEM	PART NO.	DESCRIPTION	ITEM	PART NO.	DESCRIPTION	ITEM	PART NO.	DESCRIPTION	ITEM	PART NO.	DESCRIPTION	REVISIONS	
															REV	DESCRIPTION
#24 SF4 SET	421-0349	BOLT HX .500 5.500 NC G8	P26	426-7483	PLUG T-19A	E29	403-2321	FTG HYD 90 4 FP 4 FP	224	-		112	-			
	406-8358	O-RING 1-1/2 SAE SPLIT FLANGE	P25	407-1098	PLUG HYD 3/8 MO	E28	403-1400	PIPE HYD ST ELB 90 4 MP 4 FP	223	-		111	-			
	418-6401	FLANGE HALF 1-1/2 SAE	P24	401-3558	PLUG PIPE 1.000 CS SQ MAGNETIC	E26	424-4735	FTG HYD 90 12 MU 10 MO	222	422-2463	HOSE 1250 12 60.0 OJ 90J	110	-			
	400-9758	BOLT HX .500 5.000 NC G8	P23	426-1677	PLUG HOLLOW HEX 6 MO	E25	404-0553	FTG HYD 90 8 MJ 6 MO	221	412-9164	HOSE 4000 6 140.0 OJ OJ	109	-			
#24 SF3 SET	421-0349	WASHER FLAT .500 .75 13 HRD	P22	424-1329	PLUG O-RING 2 HOLLOW HEX	E24	424-8951	ASSY ORIFICE .062 90 6MU 6MO	219	419-3525	HOSE 5000 4 33.0 OJ OJ	107	-			
	406-8358	O-RING 1-1/2 SAE SPLIT FLANGE	P21	401-3778	PIPE PLUG 1/8 NPT HEX HEAD	E23	404-0554	FTG HYD 90 8 MJ 12 MO JUMP	218	418-6148	HOSE 1250 12 342.0 OJ 90J	106	427-1012	ASSY 1.25 HYD PIPE SAE FLANGE		
	418-6401	FLANGE HALF 1-1/2 SAE	P20	422-3340	PIPE PLUG 1 NPT HEX HEAD	E22	425-5263	ELB ST-SAE-1 1/2-60°-C61-160	217	422-2057	HOSE 1250 12 20.0 OJ OJ	105	-			
#24 SF2 SET	400-9755	BOLT HX .500 3.250 NC G8	P19	400-8733	SF / PLUG 1-1/4	E21	400-2483	FTG HYD 90 16 MJ 16 FJ SWV	216	427-0947	HOSE 4000 6 120.0 OJ OJ	104	-			
	421-0349	WASHER FLAT .500 .75 13 HRD	P18	424-3929	PLUG HOLLOW HEX 4 MO	E20	400-2471	FTG HYD 90 8 MJ 8 MO	215	426-1643	HOSE 5000 4 350.0 OJ OJ	103	-			
	406-8358	O-RING 1-1/2 SAE SPLIT FLANGE	P17	424-3927	PLUG HOLLOW HEX 8 BSFP	E19	400-2481	FTG HYD 90 12 MJ 12 FJ SWVL	214	422-2189	HOSE 5000 24 58.0 OF 90FHD1	102	427-3482	ASSY BUCKET CYL HI L1850 G2 R		
	418-6401	FLANGE HALF 1-1/2 SAE	P16	407-8732	PLUG SF	E18	401-7400	FTG HYD 90 6 MJ 8 MO JUMP	213	415-5732	HOSE 4000 6 104.0 OJ OJ	101	-			
	082-7222	BOLT HX .500 2.000 NC G8	P15	422-3348	PIPE PLG 1.250 OH HEX	E17	401-4581	FTG HYD 90 4 MJ 4 MO	212	412-9107	HOSE 4000 6 26.0 OJ OJ	100	-			
#24 SF1 SET	421-0349	WASHER FLAT .500 .75 13 HRD	P14	402-0769	PLUG HX 8 MO	E16	401-1748	FTG HYD 90 4 MJ 4 MP JUMP	211	424-3738	HOSE 1250 12 300.0 OJ OJ	99	-			
	406-8358	O-RING 1-1/2 SAE SPLIT FLANGE	P13	404-0567	PLUG HX 16 MO	E15	405-6022	FTG HYD 90 20 MJ 16 MO JUMP	210	424-3745	HOSE 4000 6 176.0 OJ OJ	98	-			
	418-6401	FLANGE HALF 1-1/2 SAE	P12	401-3958	PIPE PLG 1.000 CS SQ MAGNETIC	E14	403-2325	FTG HYD 90 8 MP 8 FP STREET	209	417-7390	HOSE 2000 8 152.0 OJ 90J	97	418-6449	FTG HYD HOSE #12 (REF)		
#20 SF3 SET	400-9518	BOLT HX .438 4.000 NC G8	P11	403-1553	PLUG HX 12 MO	E13	400-2478	FTG HYD 90 6 MJ 6 FJ SWVL	208	422-3475	HOSE 375 32 95.0 OF 90F	96	425-4486	ASSEMBLY FILTER (REF)		
	421-0348	WASHER 7/16 HARDENED	P10	027-2969	PIPE PLG .250 CS HX	E12	400-2476	FTG HYD 90 20 MJ 20 MO	207	424-4950	HOSE 300 12 13.0 OJ OJ	95	424-8689	GP STEER CYL		
	406-8357	O-RING 1-1/4 SAE SPLIT FLANGE	P9	401-3779	PIPE PLUG, HH 1/4 NPT	E11	424-1246	FTG HYD 90 12 MJ 8 MO JUMP	206			94				
	418-6400	FLANGE HALF 1-1/4 SAE	P8	401-3780	PIPE PLG .375 OH HX	E10	400-2473	FTG HYD 90 12 MJ 12 MO	205	424-3736	HOSE 200 20 44.0 OJ 90J	93	427-5726	ASSY TRANSDUCER REAR FRAME		
#20 SF2 SET	421-0348	WASHER 7/16 HARDENED	P6	403-0061	PLUG HX 6 MO	E8	400-2470	FTG HYD 90 6 MJ 6 MO	203	411-9113	HOSE 2000 8 262.0 OJ OJ	91	417-2000	WASHER FLAT 2.970 3.31 03 SP		
	406-8357	O-RING 1-1/4 SAE SPLIT FLANGE	P5	422-3338	PIPE PLG .500 OH HEX	E7	400-2467	FTG HYD 90 45 16 MJ 16 MO	202	698-2815	HOSE 4000 6 158.0 OJ OJ	90	-			
	418-6400	FLANGE HALF 1-1/4 SAE	P4	401-3957	PIPE PLG .750 CS SQ MAGNETIC	E6	425-5270	ELB ST-SAE-1 1/2-60°-C61-160	201	408-2856	HOSE 2000 8 182.0 OJ OJ	89	425-2628	ASSY PRESS & RETURN MNFLD FRONT FR		
#20 SF1 SET	421-0348	WASHER 7/16 HARDENED	P2	041-6273	PLUG 3/4 NPT BREATHER	E4	424-3565	FTG HYD 90 6 MJ 14 MM0	199	698-9042	HOSE 5000 4 50.0 OJ OJ	87	425-6459	PLUG 2-1/2 SF		
	406-8357	O-RING 1-1/4 SAE SPLIT FLANGE	P1	422-3339	PIPE PLG .750 OH HEX	E3	425-5264	ELB ST-SAE-1 1/2-45°-C61-160	198	408-0310	HOSE 2250 6 92.0 OJ OJ	86	-			
#16 SF5 SET	418-6400	FLANGE HALF 1-1/4 SAE	ITEM	PART NO.	DESCRIPTION	E2	407-8637	TAPPED STREET ELB 90° 3/8	197	417-2274	HOSE 5000 32 86.0 OF 90FL3	85	421-9106	STR TUBE		
	080-1173	BOLT HX .375 3.250 NC G8				E1	404-0552	FTG HYD 90 4 MJ 6 MO JUMP	196	422-2186	HOSE 5000 24 68.0 OF OF HD	84	-			
	421-0347	WASHER 3/8 HARDENED							195	412-2872	HOSE 5000 4 70.0 OJ OJ	83	-			
#16 SF4 SET	410-5005	O-RING 1 SAE SPLIT FLANGE							194	410-3608	HOSE 5000 24 48.0 OF OF HD	82	-			
	418-6491	FLANGE HALF 1 SAE							193	422-2263	HOSE 5000 24 45.0 OF OF HD	81	-			
	424-3937	BOLT HX M12 X 1.75 X 45.0 (1.77)	M35	694-5598	PIPE NIPPLE 1" NPT				192	422-2192	HOSE 5000 24 72.0 OF 90FHD1	80	424-8529	STR HOIST CYLINDER PIPE		
#16 SF3 SET	421-0347	WASHER 3/8 HARDENED	M34	401-3799	PIPE BUSHING 1.250 1.000 6.000	A51	426-7478	FTG HYD 0 12 MO 12 MO (REF)	191	401-7540	HOSE 2000 8 118.0 OJ OJ	79	-			
	410-5005	O-RING 1 SAE SPLIT FLANGE	M33	018-0841	PIPE COUPLING STD 1/2 NPT	A50	424-3980	FTG HYD 0 6 MJ 12 MM	190	426-1766	HOSE 4000 6 340.0 OJ OJ	78	-			
	422-2102	FLANGE HALF 1 SAE CODE 62	M32	407-7098	BUSHING 1-1/4 O-RING X 1/2 NPT/F	A49	426-1726	FTG HYD 0 8 MJ 12 FP	189	424-3527	HOSE 4000 16 90.0 OJ 90F	77	-			
#16 SF2 SET	421-0347	WASHER 3/8 HARDENED	M31	426-1627	CHECK VALVE FTG 6 MJ 6 MO	A48	401-7914	FTG HYD 0 8 MJ 8 FJ UNN	188	421-1988	HOSE 5000 24 73.0 OF OF HD	76	425-2629	ASSY PRESS & RETURN MNFLD REAR FR		
	421-0348	WASHER 7/16 HARDENED	M30	422-3016	COUPLER MALE ASSY 4 MP	A47	424-4690	FTG HYD 0 24 MP 16 FO	187	418-2364	HOSE 1250 12 17.0 OJ OJ	75	427-3461	ASSY FLOAT VALVE SINGLE RH		
	410-5005	O-RING 1 SAE SPLIT FLANGE	M29	426-1624	FTG HYD 1/16 ORIFICE 4 MJ 6 MO	A46	403-0297	FTG HYD 0 2 MP 2 MP	186	417-7394	HOSE 1250 12 103.0 OJ OJ	74	423-8014	PIPE STR 2		
	426-9658	FLANGE HALF 1.00 FORGED C62	M28	416-1034	HOSE, 1-1/4 I.D. X 3	A45	405-0403	FTG HYD 0 12 MJ 16 MO	185	422-3472	HOSE 5000 32 124.0 OF 90F L4	73	427-3462	ASSY FLOAT VALVE SINGLE LH		
#16 SF1 SET	424-4758	BOLT HX M12 X 1.75 X 70 (2.75)	M27	422-3013	COUPLER MALE ASSY 6 MO 90°	A44	400-2461	FTG HYD 0 24 MJ 24 MO	184	412-9106	HOSE 4000 6 24.0 OJ OJ	72	-			
	421-0347	WASHER 3/8 HARDENED	M26	424-1063	SUCTION TUBE	A43	403-0778	FTG HYD 0 8 MO 8 MO	183	424-4745	HOSE 375 32 75.0 OF OF	71	427-3467	ASSY BUCKET CROSSOVER ROD		
	410-5005	O-RING 1 SAE SPLIT FLANGE	M25	416-3818	HOSE 6 I.D. X 8	A42	423-7965	FTG HYD 0 6 MJ 5 MO	182	427-0953	HOSE 2500 24 75.0 OF OF	70	427-3466	ASSY BUCKET CROSSOVER BASE		
	422-2102	FLANGE HALF 1 SAE CODE 62	M24	424-1391	SUCTION TUBE	A41	405-7053	BUSHING RED 3/8 FF X 5/8 MO	181	426-1642	HOSE 2500 24 96.0 OF 45F	69	-			
#12 SF5 SET	083-4948	BOLT HX .375 1.750 NC G8	M15	424-1047	SUCTION TUBE REAR 3.50 O.D.	A40	415-5550	FTG HYD 0 8 MJ 8 MP JUMP	180	411-1716	HOSE 4000 6 120.0 OJ 90J	68	-			
	421-0347	WASHER 3/8 HARDENED	M14	403-2312	PIPE HYD NIP 6 MP 8 MP HX	A39	404-0561	FTG HYD 0 12 MJ 16 MP	179	421-3834	HOSE 2500 32 60.0 OF 90F L1	67	427-3480	ASSY BUCKET CYL STD L1850 G2 R		
	410-5005	O-RING 1 SAE SPLIT FLANGE	M12	422-3014	COUPLER MALE ASSY 8 MO	A38	403-0078	FTG HYD 0 8 MO 8 MO	178	412-1659	HOSE 1250 12 138.0 OJ OJ	66	-			
	418-6491	FLANGE HALF 1 SAE	M20	021-4976	PIPE ELBOW 3/4" NPT	A37	404-0557	FTG HYD 0 6 MJ 8 MP	177	-		65	427-3468	ASSY HOIST CROSSOVER BASE		
#12 SF4 SET	080-8476	BOLT HX .375 1.250 NC G8	M19	424-3516	FTG HYD 0 24 MO 12 FO	A36	401-5753	FTG HYD 0 12 MJ 8 MP	176	424-4743	HOSE 5000 20 110.0 OF OF	64	427-3469	ASSY HOIST CROSSOVER ROD		
	421-0347	WASHER 3/8 HARDENED	M18	422-3017	COUPLER MALE ASSY 4MP 90	A35	400-2425	FTG HYD 0 20 MJ 20 MP	175	409-7827	HOSE 2250 6 58.0 OJ OJ	63	-			
	410-5004	O-RING 139 98 95D PY	M17	423-8133	SUCTION FLANGE STR	A34	400-2424	FTG HYD 0 16 MJ 16 MP	174	427-0963	HOSE 5000 32 115.0 OF 90F L4	62	427-3479	ASSY BUCKET CYL STD L1850 G2 L		
	400-2219	FLANGE HALF 3/4 SAE CODE 61	M16	423-7927	SUCTION FLANGE STR 3.00	A33	424-3936	FTG HYD 0 12 MO 4 MJ	173	426-1671	HOSE 4000 16 52.0 OJ 45F	61	427-5774	SUB ASSY PROPORTIONAL VALVE		
#12 SF3 SET	083-4948	BOLT HX .375 1.750 NC G8	M15	424-1047	SUCTION TUBE REAR 3.50 O.D.	A32	424-3928	FTG HYD 0 8 MJ 8 BSFP	172	414-3736	HOSE 4000 6 20.0 OJ OJ	60	-			

REVISIONS						
ZONE	REV	DESCRIPTION	EN	DATE	CHK	APP
	00	RELEASE	NL12-2355	9-6-12	KMD	AY AY
	01	H19 WAS HB AT HOIST CYL. SEE SHEET 1	NL12-2357	9-27-12	KMD	JD JD
	02	SEE SHEET 5	NL13-1559	2-26-13	KMD	JD JD
	03	SEE SHEET 1	NL14-1404	2-10-14	KMD	JD JD
	04	SEE SHEET 1	1324708	3-09-16	KMD	JD JD
	05	SEE SHEET 1	1346701	6-21-17	KMD	JD JD

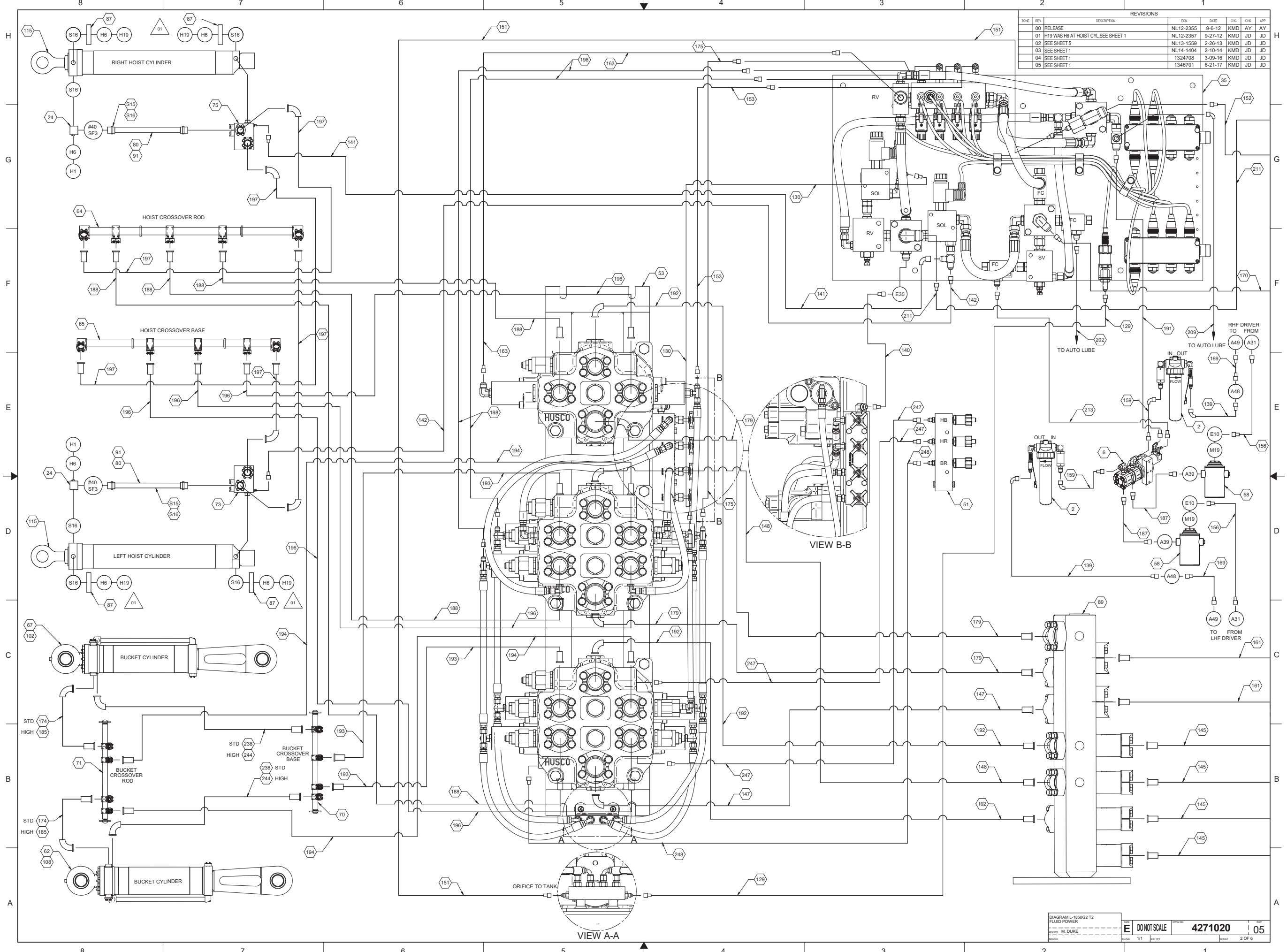


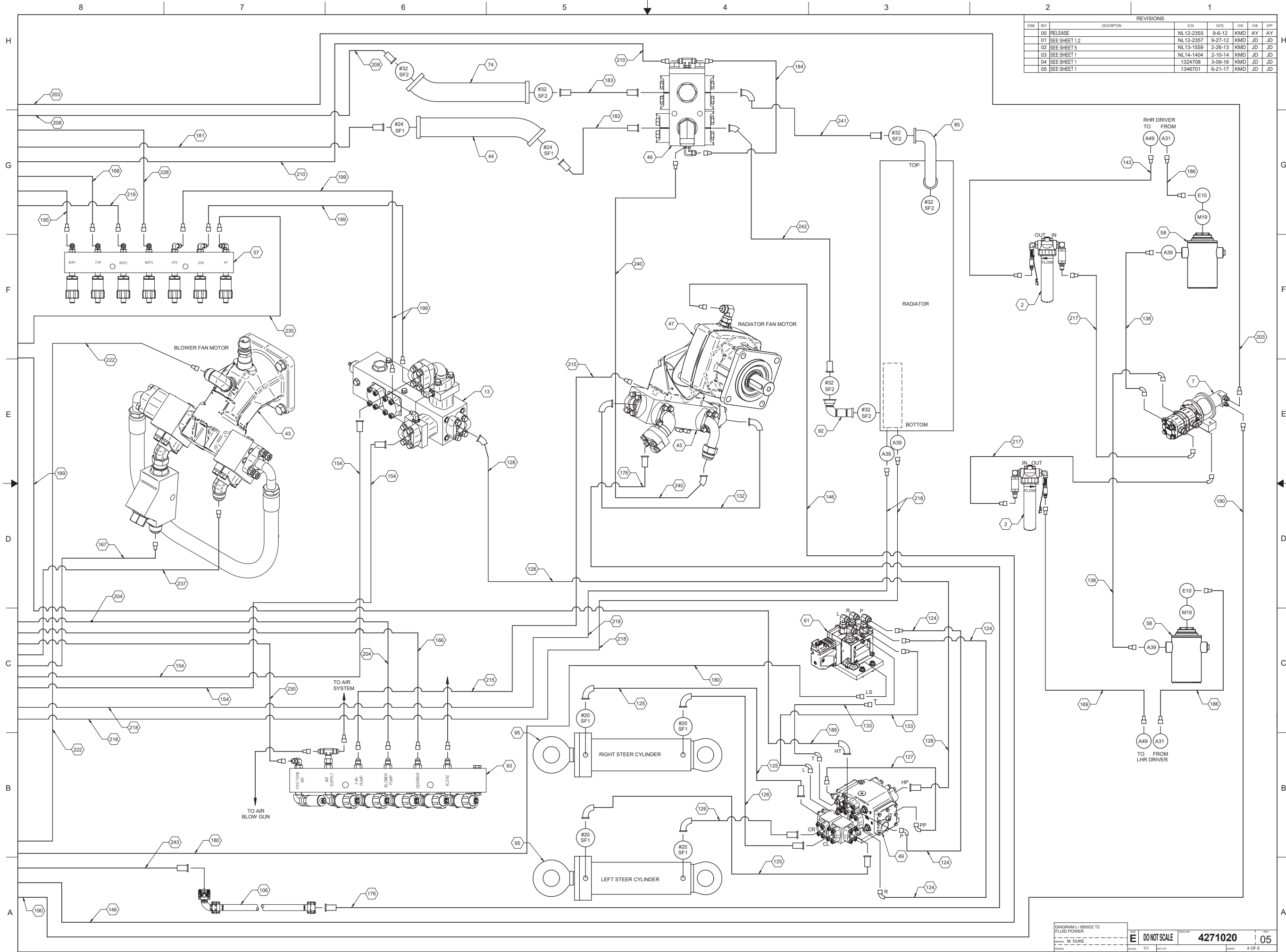
DIAGRAM L-1859G2 T2
 FLUID POWER
 DESIGNED BY M. DUKE
 SCALE 1/1
 SHEET 2 OF 6

DO NOT SCALE

4271020

05

REVISIONS						
ZONE	REV	DESCRIPTION	EN	DATE	CHK	APP
	00	RELEASE	NL12-2355	9-6-12	KMD	AY AY
	01	SEE SHEET 1,2	NL12-2357	9-27-12	KMD	JD JD
	02	SEE SHEET 5	NL13-1559	2-26-13	KMD	JD JD
	03	SEE SHEET 1	NL14-1404	2-10-14	KMD	JD JD
	04	SEE SHEET 1	1324708	3-09-16	KMD	JD JD
	05	SEE SHEET 1	1346701	6-21-17	KMD	JD JD



Auxiliary Hydraulic Oil Cooler

8

7

6

5

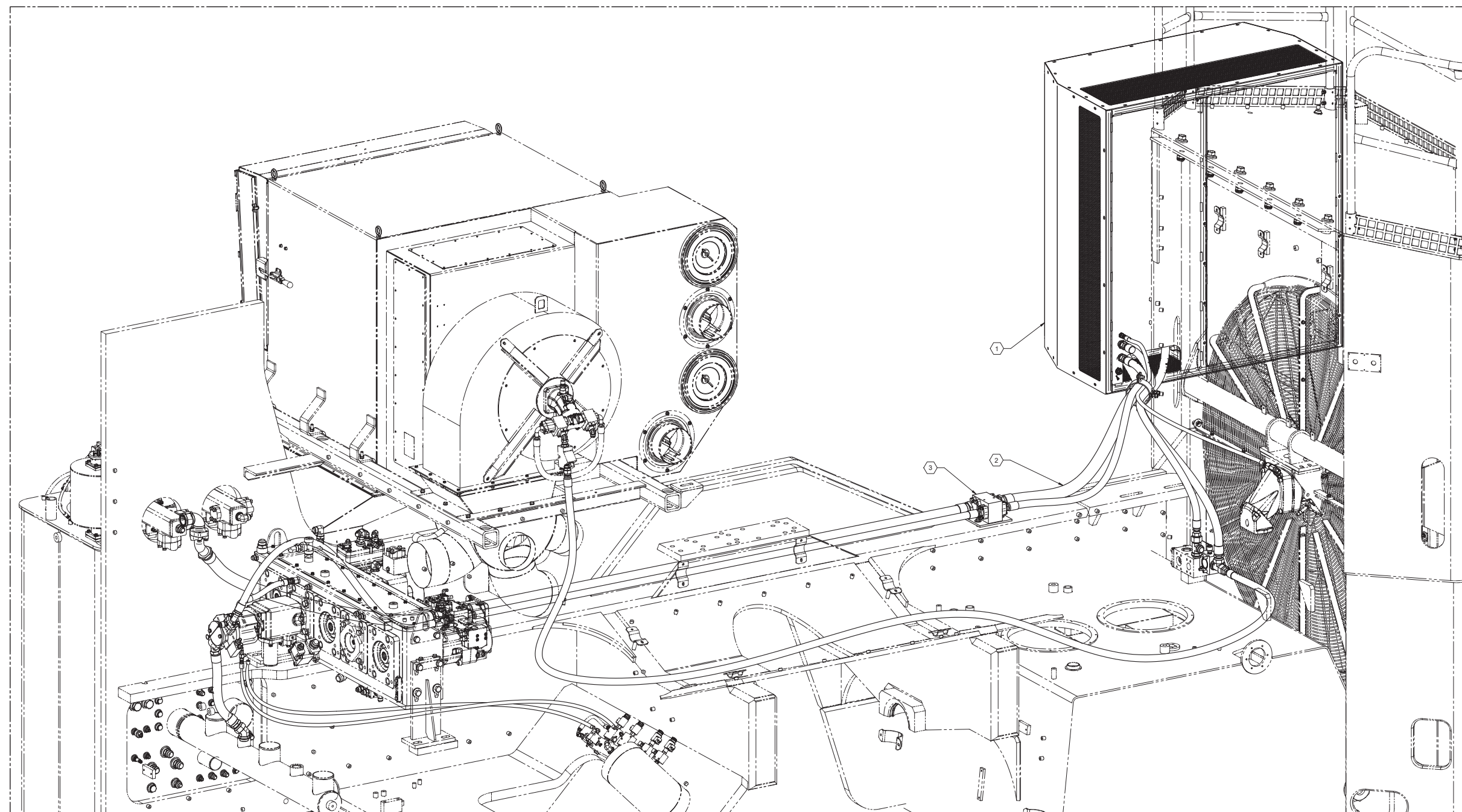
4

3

2

1

		REVISIONS				EN	DATE	CHK	APP
00	RELEASE	NL10-1855	1-14	TEW	AY	AY			
01	CORRECTED DRAWING NUMBER	NL11-0760	2-10	TEW	AY	AY			
02	REDRAW, QTY IT 3 WAS 10; DELETE 4 (4248565), IT 5 (4248563), IT 6 (4237810), IT 7 (0233042), IT 8 (0753123), IT 9 (0829683), IT 10 (0810971); ADD IT 13, 14, 20, 22, 24, 25.								
02	27-60; SEE SHEET 2	NL11-1707	8-5	TW	AY	AY			
03	REDRAW: ADD NEW BOM	NL12-1868	7-17	TEW	AY	AY			
04	MRS 1930; DELETE SHEET 2	1331708	8-11-16	RAH	JB	JBO			
05	#2 WAS 4277973	1366426	06-26-18	EER	EER	EER			



ITEM	PART NO.	QTY	DESCRIPTION
3	4277974	1	GP HW AUX OIL COOLING L1850 G2
2	4294231	1	GP HSEM AUX OIL COOLING L1850 G2
1	4271151	1	ASM AUX OIL CLR L13/18/2350 G2

THIS DRAWING AND ALL DATA THEREON IS THE PROPERTY OF LETOURNEAU TECHNOLOGIES. IT IS CONFIDENTIAL AND MUST NOT BE COPIED, IT IS LOANED SUBJECT TO RETURN UPON DEMAND AND IS NOT TO BE USED IN ANY WAY DETRIMENTAL TO OUR INTEREST.

UNLESS OTHERWISE SPECIFIED:
 - DIMENSIONS ARE IN INCHES & APPLY BEFORE PLATING OR FINISH COATINGS.
 - TOLERANCES ON: ANGLES ±1° FRACTIONS ±0.10 XX DECIMAL ±0.03 XXX DECIMAL ±0.015
 - MACHINED CORNERS: R64 X .45
 - WELD PROPERTIES SHALL MEET THE MINIMUM REQUIREMENTS OF THE BASE MATERIAL.

THIRD ANGLE PROJECTION

FIRST USED ON CONTRACT NO. **LeTourneau Technologies™**

DRAWN	twillis	DATE	12-22-2010
CHK	AY	DATE	01-14-2011
ENGR		DATE	
PROD ENGR	AY	DATE	01-14-2011
PROJ APPROVAL		DATE	
MATL		DATE	

KIT AUX OIL COOLER L1850 G2

SCALE: 1:8 (SEE DET 2438.8 DIM) SHEET: 1 OF 1

ITEM NO: **4271226** REV: **05**

8

7

6

5

4

3

2

1

Auxiliary Steering

8

7

6

5

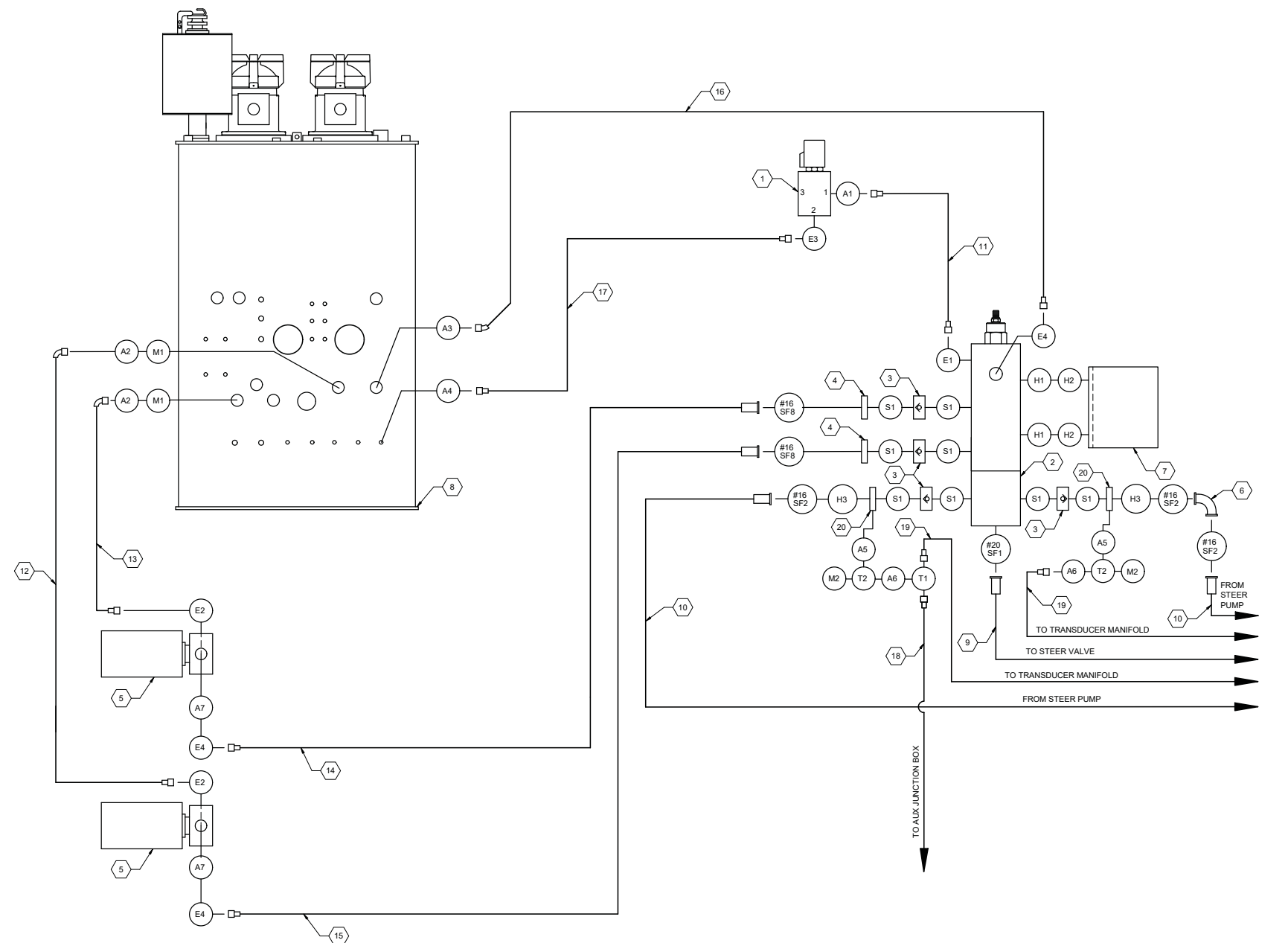
4

3

2

1

REVISIONS					
DATE	REV	DESCRIPTION	ENR	DATE	CHK
04		REDRAWN, ITEM 9 WAS 4244174	NL12-1837	6-21-12	KMD



ITEM	PART NO.	DESCRIPTION	
SPLIT FLANGE SETS			
T2	403-1446	2 TEE 8 FP 8 FP 4 FP	
T1	406-3332	1 TEE 4 MJ 4 MJ 4 FJ	
TEES			
S1	410-5005	8 O-RING, 1" SAE S.F. POLYURETHANE	
SEALS			
M2	422-3016	2 COUPLER MALE ASY 4 MP	
M1	401-3952	2 PIPE RED 1.50 1.25 BUSHING	
MISC FITTINGS			
H3	400-1842	8 CSCR FH .375 3.00 NC G8	
H2	075-3123	2 WASHER LOCK SPR. .375 .68 .09	
H1	400-9649	2 BOLT HX .375 5.000 NC G8	
HARDWARE			
E4	400-2475	3 FTG HYD 90 16 MJ 16 MO	
E3	401-7400	1 FTG HYD 90 6 MJ 8 MO	
E2	400-2476	2 FTG HYD 90 20 MJ 20 MO	
E1	400-2470	1 FTG HYD 90 6 MJ 6 MO	
ELBOWS			
A7	425-7213	REF FTG HYD 012 MO 16 FO	
A6	401-6785	2 FTG HYD 0 4 MP 4 MJ	
A5	405-1567	2 FTG HYD 0 6 MO 4 MP	
A4	401-8666	REF FTG HYD 0 8 MP 8 MJ	
A3	403-3994	1 FTG HYD 0 16 MJ 12 MP	
A2	400-3425	2 FTG HYD 0 20 MJ 20 MP	
A1	402-0771	1 FTG HYD 0 8 MO 6 MJ	
ADAPTERS			
20	424-1394	2 TEST BLOCK 1.00 SF C 61 TO C 62	
19	698-9042	2 HOSE 5000 4 50.0 OJ OJ	
18	415-0727	1 HOSE 5000 4 56.0 OJ OJ	
17	415-0900	1 HOSE 2000 8 60.0 OJ 45J	
16	422-3499	1 HOSE 1000 16 76.0 OJ 45J	
15	424-3921	1 HOSE 4000 16 72.0 OJ OF	
14	424-3920	1 HOSE 4000 16 48.0 OJ OF	
13	424-3923	1 HOSE 625 20 32.0 OJ 90J	
12	424-3500	1 HOSE 625 20 26.0 OJ 90J	
11	414-3736	1 HOSE 4000 6 20.0 OJ OJ	
10	424-3727	2 HOSE 5000 16 90.0 OF 90F C62	
9	424-4714	1 HOSE 5000 20 36.0 OF 45F	
8	424-1325	REF HYDRAULIC RESERVOIR	
7	423-8010	REF ANGLE MOUNT	
6	424-1557	1 ELBOW STRUCTURE, 90° #16 C62	
5	421-3992	2 PUMP/DC MOTOR 24V 9HP	
4	421-9017	2 PLATE, 1" CONNECTOR	
3	415-0321	4 CHECK VALVE, 1" S.F.	
2	424-8914	REF ASSY STEERING JUNCTION VALVE	
1	424-4831	1 VALVE ASY SOL 2 WAY NO 24 VDC	
ITEM	PART NO.	QTY	DESCRIPTION

THIS DRAWING AND ALL DATA THEREIN IS THE PROPERTY OF LETOURNEAU TECHNOLOGIES. IT IS CONFIDENTIAL AND MUST NOT BE COPIED, IT IS LOANED SUBJECT TO RETURN UPON DEMAND AND IS NOT TO BE USED IN ANY WAY DETRIMENTAL TO OUR INTEREST.

UNLESS OTHERWISE SPECIFIED:
 - DIMENSIONS ARE IN INCHES & APPLY BEFORE PLATING OR FINISH COATINGS
 - TOLERANCES ON: ANGLES ±1° FRACTIONS ±.015 XX DECIMAL ±.03 XXX DECIMAL ±.015
 - MACHINED CORNERS: R4 X .45
 - WELD PROPERTIES SHALL MEET THE MINIMUM REQUIREMENTS OF THE BASE MATERIAL.

THIRD ANGLE PROJECTION

FIRST USED ON CONTRACT NO. 424-5530

OWN	M. DUKE	DATE	6-21-2012
CHK	AY	DATE	6-21-12
ENGR		DATE	
PROD ENGR	AY	DATE	6-21-12
PROJ APPROVAL		DATE	
MATL		DATE	

LeTourneau Technologies™

AUX STEERING L-1850

SCALE: 1/1
 SHEET: 1 OF 1

DO NOT SCALE
 4243922
 04

8

7

6

5

4

3

2

1

